

FOLLOW THE STORY

NOWHERE BETTER TO TRACE HISTORY

VISIT SOUTHEAST MONTANA

What is history, if not a collection of stories told through different perspectives?

In Southeast Montana, natural beauty blends with the rich history of the Old West, along with the traditions of the Crow and Northern Cheyenne tribes, to transport you to storied days gone by. Walk over the battlefields where brave warriors and soldiers laid down their lives. Follow the courageous footsteps of Lewis and Clark. Or, experience the dynamics that ranching and railroad brought to these rolling prairies.

There is no doubt that the individuals, families and native peoples who made Southeast Montana their home were a hardy bunch. As you peruse the many museums, heritage centers and historic sites across Southeast Montana, put yourself in their shoes, read their stories and understand their journeys. That is what makes history.

For, without history, we have no story. Write yours *Out Here*.

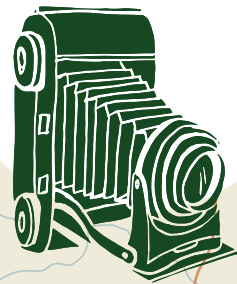
MUSEUM, VISITOR CENTER OR HISTORICAL SOCIETY
Preserving the past of Southeast Montana

NATIONAL MONUMENT OR STATE PARK
A landscape of historical treasures

Visitor Information Center

Montana State Park

HISTORY



FOLLOW THE STORY

NOWHERE BETTER TO TRACE HISTORY

VISIT SOUTHEAST MONTANA

SOUTHEASTMONTANA.COM | 1.800.346.1876

#NowhereBetter | #SoutheastMontana [f](#) [x](#) [i](#)

PRESERVING THE PAST MUSEUMS, VISITOR CENTERS + HISTORICAL SOCIETIES

1 RANGE RIDERS MUSEUM

435 Interstate 94 Business • Miles City, MT 59301
Gain a glimpse of the Old West at this heritage center-turned-museum, with an eclectic assortment of farm tools, historic photographs, an impressive barbed wire display and one of the nation's premier arrowhead collections, plus an entire building dedicated to the weaponry of one donor—including some pre-revolution pieces. [rangeridersmuseum.com](#)



BIG HORN COUNTY HISTORICAL MUSEUM AND VISITOR CENTER, VISIT MONTANA

2 BIG HORN COUNTY HISTORICAL MUSEUM AND VISITOR CENTER

1163 3rd St. E. • Hardin, MT 59034
Vintage photographs and artifacts are housed throughout 24 historic structures; four exhibit buildings and the main building, which features a large gallery, offices, visitor center, and a gift shop. Discover Fort Custer, Plains Indians, Will James and Yellowtail's teepee. [bighorncountymuseum.org](#)

3 WESTERN HERITAGE CENTER

2822 Montana Ave. • Billings, MT 59101
Telling the stories of the people of the Yellowstone River Valley and the Northern Plains, this center focuses on a deeper understanding of the region and appreciation of its inhabitants. With permanent and traveling exhibits, oral histories, presentations and walking tours, the 1901 former Parmly Billings Memorial Library Building remains a regional treasure. [ywhc.org](#)

4 MOSS MANSION MUSEUM

914 Division St. • Billings, MT 59101
Tour turn-of-the-century life as the affluent Moss family lived it. The mansion graced the silver screen in films like *Return of the Lonesome Dove*. View original draperies, furniture, fixtures, Persian carpets and artifacts displayed in the red sandstone structure that—along with the Moss family—greatly influenced the culture of Billings. [mossmansion.com](#)

5 HUNTLEY PROJECT MUSEUM OF IRRIGATED AGRICULTURE

770 Railroad Highway • Huntley, MT 59037
Witness the reclamation project that changed the history of the region. The museum emphasizes the homesteading era from the late 1800s through the early 1900s, including the technology and history of irrigated agriculture in the northern Great Plains. Enjoy a custom tour across the amazing grounds dominated by century-old cottonwood trees. [huntleyprojectmuseum.com](#)

6 CARTER COUNTY MUSEUM

306 N. Main St. • Ekalaka, MT 59324
Offering a history that spans 80 million years, the Carter County Museum—a site along the Montana Dinosaur Trail—was Montana's first county museum and the first in the state to display dinosaurs. Exhibits range from a mounted skeleton of an Anototitan copei, to 11,000-year-old arrowheads, to a two-headed calf. [cartercountymuseum.org](#)

7 POWDER RIVER HISTORICAL MUSEUM AND MAC'S MUSEUM

102 W. Wilson St. • Broadus, MT 59317
At Powder River Museum discover Plains Indians' artifacts, antique guns and ammunition, pre-1900 buggies, vintage autos, rebuilt engines and farm implements. You'll also find prized battlefield artifacts from the Reynolds Campaign in 1876—a forerunner of the Battle of Little Bighorn. [powderriverhistory.com](#)

8 FRONTIER GATEWAY MUSEUM

201 State St. • Glendive, MT 59330
Another site on the Montana Dinosaur Trail, the Frontier Gateway Museum offers a walk way back in time with a full-size *Stegoceras* replica, plus an impressive collection of historic structures, vintage photographs and books, fossils, medieval armor and turn-of-the-century gowns. [frontiergatewaymuseum.org](#)

9 O'FALLON HISTORICAL MUSEUM

723 S. Main St. • Baker, MT 59313
Here you'll find Montana's largest steer (at 3,980 pounds) and the county's original jail-turned-museum. A tar paper homestead house illustrates pioneer life, and the Duffield and Lambert homes display everyday items from the early 1900s. Take a walk back in time at the trading post, barber shop, dress shop and parlor. [falloncounty.net/museum/museum.html](#)



MUSSELHELL COUNTY HISTORICAL MUSEUM, NATHAN SATRAN PHOTOGRAPHY

10 MUSSELHELL COUNTY HISTORICAL MUSEUM

524 First St. W. • Roundup, MT 59072
Experience life as it was in the Old West—the days of coal mines, cowboys and cattle drives. Tour an original log cabin built by English lords for their early cattle operation, plus an old barber shop and general store. Also, on display, a 1932 Pietenpol airplane built from a kit with a Model A Ford engine. [mvhm.us](#)

11 PRAIRIE COUNTY MUSEUM AND EVELYN CAMERON GALLERY

101 Logan Ave. • Terry, MT 59349
212 Laundre Ave. • Terry, MT 59349
Terry is a town with several historical options. With an emphasis on open-range cattle, this museum gives an accurate account of ranching and the local economy during the turn of the century. Evelyn Cameron was a photographic pioneer at a time when women were restricted to homemaking and child rearing. View her images of life on the prairie, which starkly demonstrate her deep understanding of both remedial photographic techniques and the settlers who made Southeast Montana their home. [visitterrymt.com/evelyn-cameron](#) and [evelyncameron.org](#) (open by appointment)

12 ROSEBUD COUNTY PIONEER MUSEUM

1335 Main St. • Forsyth, MT 59327
Get a glimpse into everyday life during the turn of the century. The Rosebud County Pioneer Museum houses a large steam engine and collections from the founding families of Forsyth and Rosebud counties. You'll find vintage clothing, a barbed wire display and various farm implements. [rosebudcountymt.gov/departments/museum](#)

13 TREASURE COUNTY 89ERS MUSEUM

325 Elliott Ave. • Hysham, MT 59038
Local history is preserved here, including a fossil and dinosaur collection, relics from the Indian Wars, a rope used to hang outlaws and an old drug store building. Discover the history of the Crow people, Lewis and Clark and astronaut Frank Borman—the mission commander for the Apollo 8 flight around the moon. [visitmt.com/listings/general/museum/treasure-county-89-ers-museum.html](#)

14 PIERRE WIBAUX MUSEUM

112 Orgain Ave. • Wibaux, MT 59353
Enjoy the historic walking tour of the Wibaux Business District, Old St. Peter's Catholic Church and the Pierre Wibaux Statue. Wibaux was the world's largest cattle rancher in the late 1800s, who had his French gardener craft a meticulous garden oasis of vibrant flora and a grotto crafted of agate, petrified wood and lava. The grounds provide a perfect picnic spot. [visitmt.com/listings/general/museum/wibaux-museum.html](#)



YELLOWSTONE COUNTY MUSEUM, CASSIE SOLBERG

15 YELLOWSTONE COUNTY MUSEUM

1950 Airport Terminal Circle • Billings, MT 59105
The "Museum on the Rims" offers an unrivaled view of Billings plus a stunning array of cultural artifacts and rare memorabilia from the pioneer days into the mid 20th century. This treasure trove includes a vast collection of weaponry from the days of Calamity Jane and Jesse James, pioneer wagons and stunning tribal beadwork. [ycmhistory.org](#)

16 SCHOOLHOUSE HISTORY & ART CENTER (SHAC)

400 Woodrose St. • Colstrip, MT 59323
Learn the story of Colstrip area mining and ranching from the 1920s to today. Marrying history with art is the common goal, as demonstrated by permanent and rotating exhibits with this 1924-era schoolhouse as the perfect canvas. [colstripshac.org](#)

17 RICHEY HISTORICAL MUSEUM

122 South Main St. • Richey, MT 59259
The museum documents fascinating historical heritage from the early homestead days using artifacts from the local newspaper and post office. The entire complex of six buildings includes Lisk Creek School, a homestead, the town's first mercantile, the old jail and the bank building. [richeynt.org/richey-historical-museum](#)



THE WARRIOR TRAIL

Montana Highway 212, known to many as the Belle Fourche cutoff from the Rapid City area to Billings, Montana is known as the Warrior Trail because of the numerous battles fought in the region including

the Battle of the Rosebud, Reynold Fight, Battle of Powder River and Battle of Little Bighorn. As you travel this two-lane highway, study the landscape and imagine the many challenges the soldiers and warriors faced over the years of fighting.

A LANDSCAPE OF HISTORICAL TREASURES

NATIONAL MONUMENTS + STATE PARKS

18 LITTLE BIGHORN BATTLEFIELD NATIONAL MONUMENT

Interstate 90 Frontage Road • Crow Agency, MT 59022
Studied perhaps more than any other battle on U.S. soil, the Battle of Little Bighorn stands as the Plains Indians' greatest victory over U.S. military forces. Drive the 4.5-mile tour road and along the way listen to the cell phone audio narrative of the battle story. Open year-round; seasonal hours. **NOTE:** The Little Bighorn Battlefield National Monument will undergo a major renovation, starting in 2024. For the most up-to-date information on construction restrictions, see the website at [nps.gov/libi](#)



19 POMPEYS PILLAR NATIONAL MONUMENT

3039 U.S. Highway 312 • Worden, MT 59088
Rising nearly 200 feet high along the banks of the Yellowstone River, Capt. William Clark, of the esteemed Corps of Discovery, carved his name in this rock pillar on July 25, 1806. But he was not the first, nor the last, to utilize this "communication tower" over the past centuries. Open seasonally. [nps.gov/nr/travel/lewisandclark/pom.htm](#)

20 WOLF MOUNTAINS BATTLEFIELD NATIONAL MONUMENT

Approximately 4 miles southwest of Birney, MT, under private ownership of the Quarter Circle U Ranch
The last major battle of the Great Sioux War—the Battle of Wolf Mountains—was fought in this Tongue River Valley location. The landscape remains mostly unchanged from the time of the battle. A rifle pit can be seen among the towering rock walls. [visitmt.com/listings/general/battlefield/wolf-mountain-battlefield.html](#)

21 REYNOLDS BATTLEFIELD NATIONAL MONUMENT

28 miles southwest of Broadus, MT on the Powder River down County Road 391 toward Moorhead Road (private)
One of several skirmishes leading up to the Battle of Little Bighorn, this fight lasted only five hours. Col. Joseph L. Reynolds column encountered a Cheyenne camp and attacked, thinking the warriors were Sioux. While there was no clear winner, the warriors escaped and joined Crazy Horse and his people near what is now Ekalaka. [visitmt.com/listings/general/battlefield/reynolds-battlefield.html](#)

22 CANYON CREEK BATTLEFIELD NATIONAL MONUMENT

On Buffalo Trail Road 8 miles north of Laurel, MT
This walk-through display tells the history of the Canyon Creek Battle between the Nez Perce, led by Chief Joseph, and the U.S. Cavalry, led by Colonel Samuel Sturgis. At the Buffalo Trail Road pullout you'll find a pavilion, a stone monument, a bronze plaque and several interpretive panels. [nps.gov/nepe/planyourvisit/visit-canyon-creek.htm](#)

23 ROSEBUD BATTLEFIELD STATE PARK

45.22031 / -106.97590 • Busby, MT 59016
Also known as the "Place Where the Girl Saved Her Brother," one of the largest of the Indian War battles took place here, just days before the Battle of Little Bighorn. The site is preserved with paths to the Kobold Buffalo Jump and to the top of Crook's Hill. Get the Native American perspective from Conical Hill and trek to undeveloped Van Vliets Ridge, with stunning views of the battle site and the Bighorn Mountains. [stateparks.mt.gov/rosebud-battlefield](#)

24 CHIEF PLENTY COUPS STATE PARK

1 Edgar Pryor Road • Pryor, MT 59066
One of the last great Crow Chiefs, Plenty Coups, left his reservation homestead to the people of Montana. Situated within the Crow Indian Reservation, this day-use state park and National Historic Landmark includes his preserved log home, sacred spring, farmstead and interpretive visitor center. [stateparks.mt.gov/chief-plenty-coups](#)

25 PICTOGRAPH CAVE STATE PARK

3401 Coburn Road • Billings, MT 59101
With pictographs dating back to when Cleopatra was on the throne and the Roman Legions sacked Carthage, this archeological, historical and cultural site demonstrates the importance of understanding communication over the centuries. Weather conditions dictate the amount and details of the pictographs that are visible daily. [stateparks.mt.gov/pictograph-cave](#)

26 MEDICINE ROCKS STATE PARK

1141 Highway 7 • Ekalaka, MT 59324
Mystery is part of the allure at this Eastern Montana state park of "big medicine," where sandstone spires of wind-worn, haunting hoodoos rise up out of the sacred ground. These revered pillars reflect amazing tones of yellow, orange and red during a sunrise or sunset, and centuries of nearly 15,000 inscriptions echo stories that challenge time. Listed on the National Register of Historic Places. [stateparks.mt.gov/medicine-rocks](#)

27 YELLOWSTONE KELLY INTERPRETIVE SITE

Swords Rimrock Park • Billings, MT 59105
Trace the adventures of Luther Sage "Yellowstone" Kelly, a young frontier hero who answered the call of the Wild West. His friends and confidants included the likes of William Frederick "Buffalo Bill" Cody and President Teddy Roosevelt. Today a monument on Billings' Heritage Trail System honors Kelly's fascinating story. [yellowstonekelly.org](#)

*Many Southeast Montana museums are free with some asking a nominal fee or donation. Check websites for hours—many open seasonally and by advanced appointment.