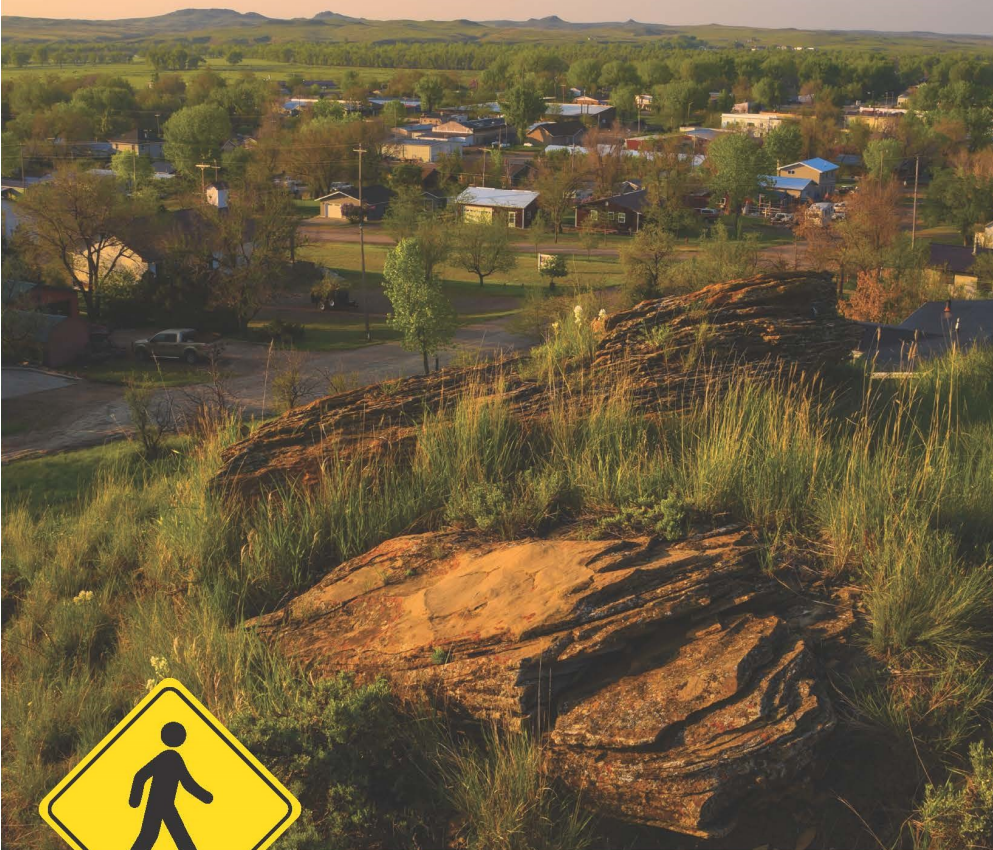


BROADUS, MONTANA Walking Map



Explore the town of Broadus and learn about the historical aspects of this robust community.

In prehistoric times, sediments (gumbo) thousands of feet thick were deposited by ancient seas and swamps, while mastadons and saber-toothed tigers roamed the area.

Much later, Tséhésenéststótse (Cheyenne), Očeti Šakówiŋ (Sioux) and Hinónó'etíit (Arapahoe) nations hunted and lived here. Then in the 1700s, French Canadians explored the area.

1742

Francois A. Larocque and Louis-Joseph Verendrye were fur traders who reported buffalo and grizzly bears*

1865

Col. Nelson Cole leads Powder River Indian Expedition*

1880

Texas-based Niobrara Cattle Company runs cattle in the open range

1919

Powder River County formed

1967

Oil discovered in Belle Creek

1859

Capt. W.F. Reynolds leads scientific expedition with guide Jim Bridger; Reynolds names Mizpah Creek; Bridger names Pumpkin Creek*

1876

Col. Joseph Reynolds attacks Northern Cheyenne village led by Chief Two Moons. Precursor to the Battle of the Little Big Horn

1909

Enlarged Homestead Act brings many homesteaders staking claims

1920

Broadus selected as county seat

2016

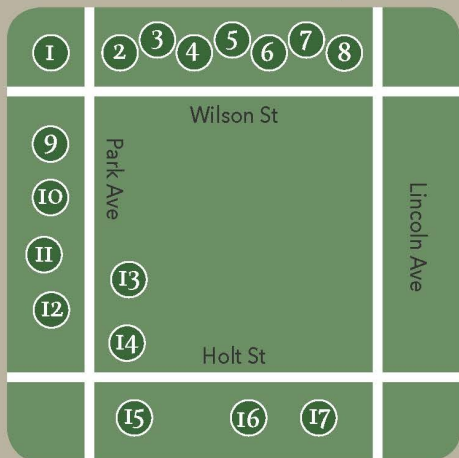
Mammoth discovered on the Powder River

Reynolds Battlefield

Today agriculture (cattle, sheep and wheat) and oil remain the biggest industries in Powder River County.

*Echoing Footsteps, first edition

Historic Town Square



1. Powder River Historical & Mac's Museum, originally Yellowstone Lumber Co. (1919)
2. A. Montgomery's General Merchandise (1919)
3. Powder River Club & Cafe (1946)
4. Welcome Sign (1994)
5. Montana Bar & Café (1950), orig. the Gilmore Café (1940)
6. Little Joe's Barbershop & Bathhouse (1941)
7. Lewis Restaurant & Meat Market (1920)
8. Willis Martin Pool Hall (1919)
9. Senior Citizens Center, orig. the Powder River County Bank Building (1919)
10. First National Bank (1919)
11. Broadus Mercantile (1919)
12. Rue's Clothing (1950)
13. Rock Wall, WPA Project (1940)
14. Windmill (1996)
15. Texaco Station (1945)
16. Pastime Theater (1946) & Pod's Barbershop (1969)
17. The Deer Family Wall Sculpture (1975)



EXPLORE BROADUS

Discover more about healthy living and and engaging in the city of Broadus.

Powder River Trails powderrivertrails.com

MSU Extension Powder River County
powderriver.msuextension.org/

Powder River Chamber of Commerce & Agriculture
prchamberofcomm.com

Southeast Montana Tourism southeastmontana.com/

Powder River Historical Museum
Open May-September, 406-436-2977

Powder River Community Endowment Fund prscdc.com

SPONSORS Powder River Trails, MSU Extension-Powder River County, Powder River Chamber of Commerce & Agriculture, Powder River Historical Museum, School Community Development Council, Powder River Community Endowment Fund, Powder River Tobacco Prevention, Southeast Montana Tourism

LAYOUT MSU Extension Communications

PHOTOS Powder River Historical Museum, MSU Extension-Powder River County
cover photo by Jimmy Collins Photography

Produced with support from Visit Southeast Montana Tourism with Accommodations Tax Funds
Printed for free distribution.



Search for "Broadus Historic Walking Tour" on Izi.Travel App or scan the code

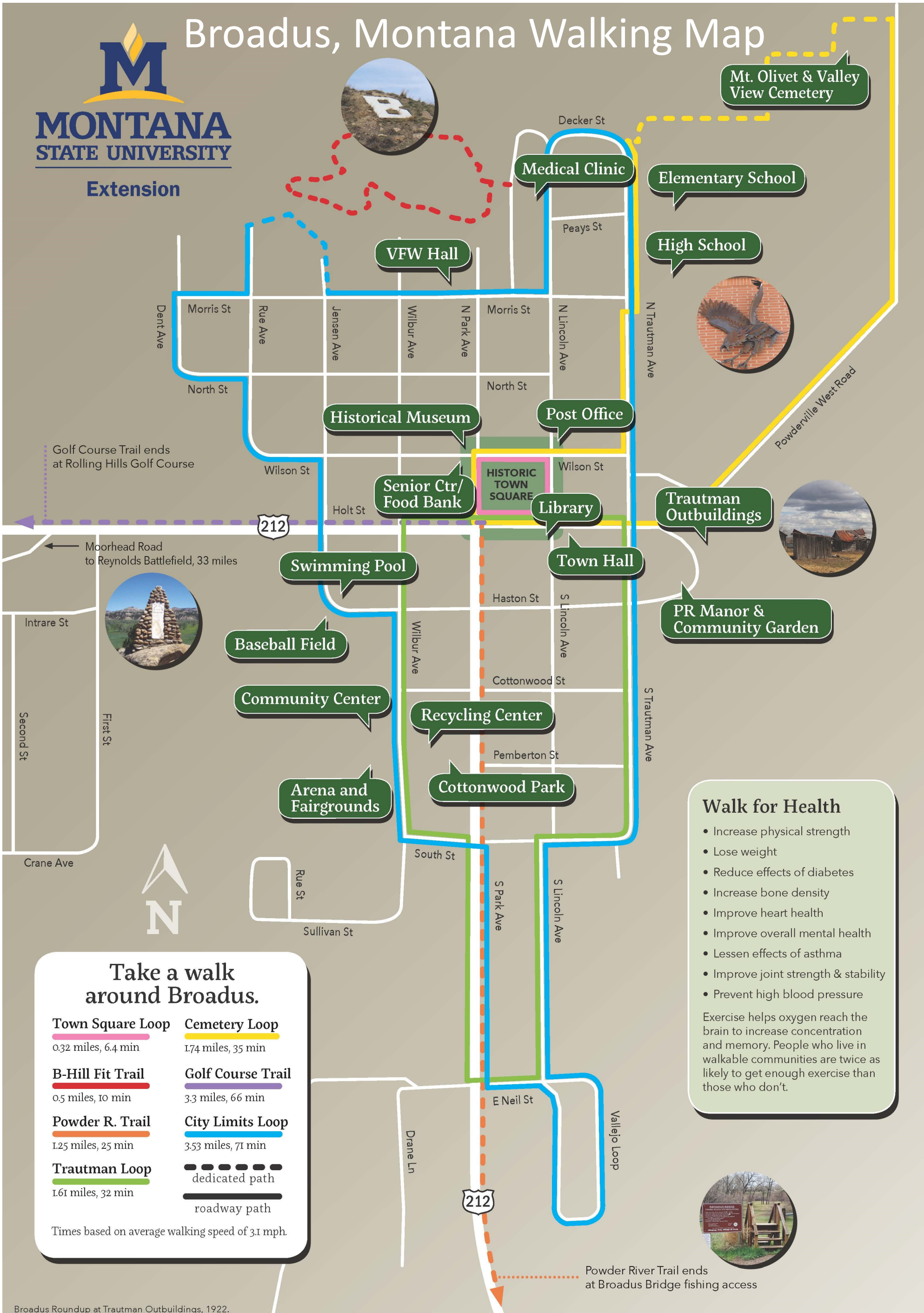


© 2019 The U.S. Department of Agriculture (USDA), Montana State University and Montana State University Extension prohibit discrimination in all of their programs and activities on the basis of race, color, national origin, gender, religion, age, disability, political beliefs, sexual orientation, and marital and family status. Issued in furtherance of cooperative extension work in agriculture and home economics, acts of May 8 and June 30, 1914, in cooperation with the U.S. Department of Agriculture, Cody Stone, Director of Extension, Montana State University, Bozeman, MT 59717.



Broadus, Montana Walking Map

Extension



Mt. Olivet & Valley View Cemetery

Medical Clinic

Elementary School

High School

VFW Hall

Historical Museum

Post Office

Senior Ctr/
Food Bank

Library

Trautman
Outbuildings

Swimming Pool

Town Hall

PR Manor &
Community Garden

Baseball Field

Community Center

Recycling Center

Arena and
Fairgrounds

Cottonwood Park

Walk for Health

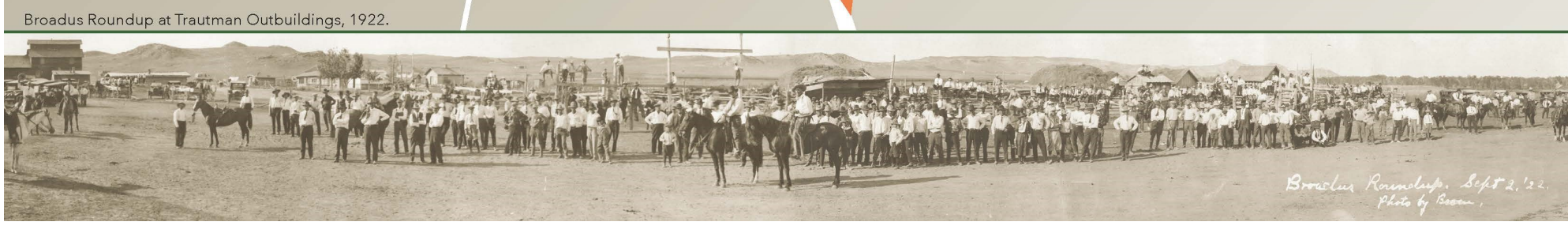
- Increase physical strength
- Lose weight
- Reduce effects of diabetes
- Increase bone density
- Improve heart health
- Improve overall mental health
- Lessen effects of asthma
- Improve joint strength & stability
- Prevent high blood pressure

Exercise helps oxygen reach the brain to increase concentration and memory. People who live in walkable communities are twice as likely to get enough exercise than those who don't.

Take a walk around Broadus.

Town Square Loop 0.32 miles, 6.4 min	Cemetery Loop 1.74 miles, 35 min
B-Hill Fit Trail 0.5 miles, 10 min	Golf Course Trail 3.3 miles, 66 min
Powder R. Trail 1.25 miles, 25 min	City Limits Loop 3.53 miles, 71 min
Trautman Loop 1.61 miles, 32 min	dedicated path
	roadway path

Times based on average walking speed of 3.1 mph.



Broadus Roundup at Trautman Outbuildings, 1922.

Broadus Roundup, Sept 2, '22. Photo by Bacon.