

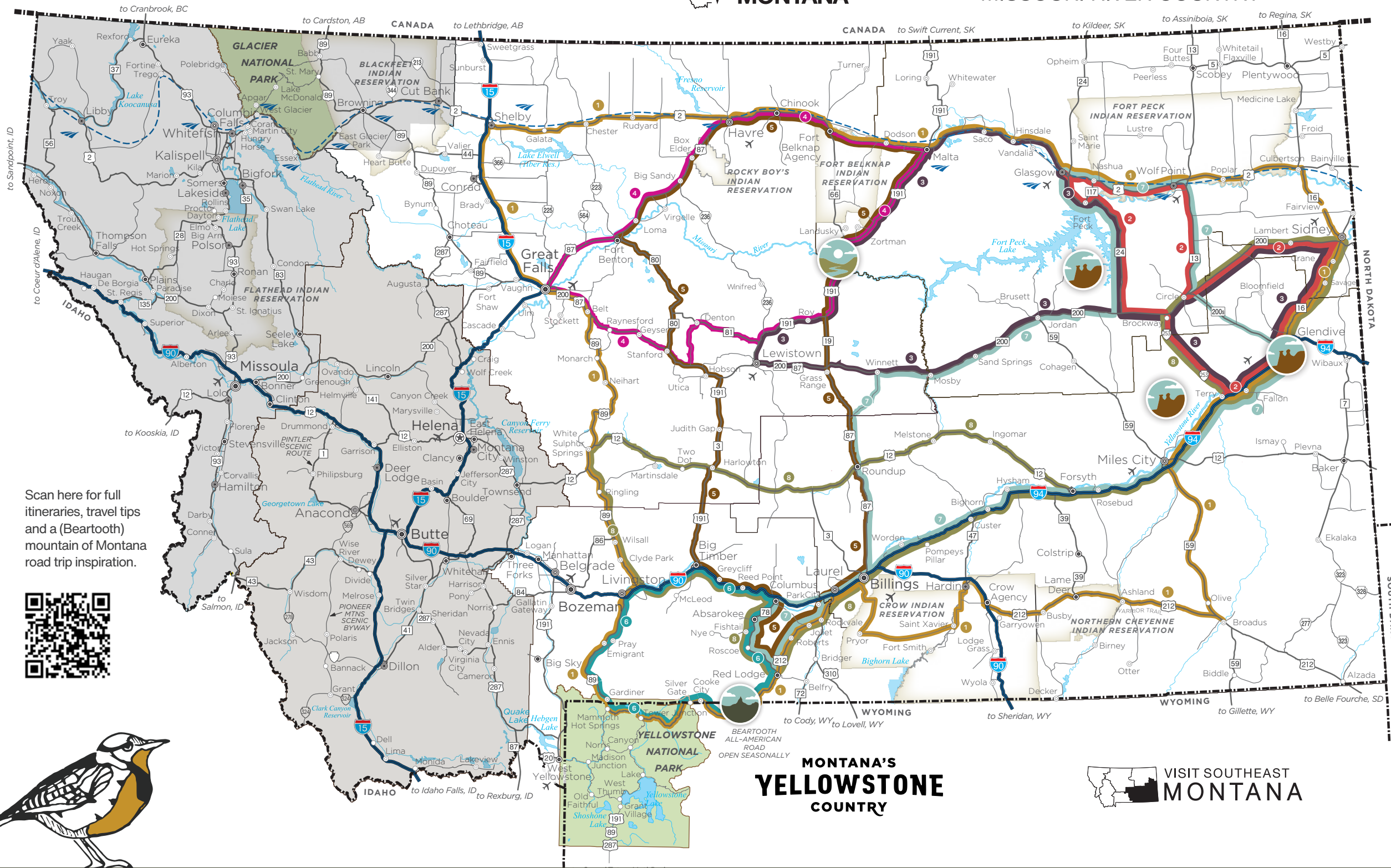
Embark on a road trip among the Montana Badlands, the Missouri River Breaks and the Beartooth Mountains and discover incredible recreation, fascinating history and authentic rural communities in these awe-inspiring landscapes. Find your next adventure on the map below, in the descriptions on the reverse side, or on our website — montanagreatwideopen.com — and hit the open road!

MONTANA'S GREAT WIDE OPEN

BADLANDS TO BREAKS TO BEARTOOTH MOUNTAINS



MONTANA'S MISSOURI RIVER COUNTRY






Scan here for full itineraries, travel tips and a (Beartooth) mountain of Montana road trip inspiration.



ROAD TRIP ADVENTURES

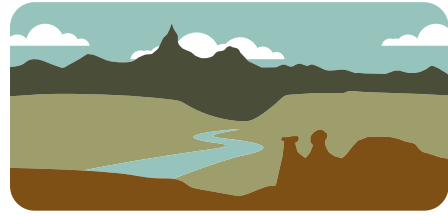
- 1** Badlands to Breaks to Beartooths Loop
8 DAYS
- 2** Badlands Loop
3 DAYS
- 3** Badlands to Breaks Loop
5 DAYS
- 4** Breaks Loop
4 DAYS
- 5** Breaks to Beartooths Loop
5 DAYS
- 6** Beartooths Loop
3 DAYS
- 7** Beartooths to Badlands Loop
5 DAYS
- 8** Highway 12 Beartooths to Badlands Loop
6 DAYS

Look for these icons on the map to discover where you'll encounter striking badlands, breaks and Beartooths landscapes.

-  MONTANA **BADLANDS**
-  MISSOURI RIVER **BREAKS**
-  **BEARTOOTH MOUNTAINS**



MONTANA'S YELLOWSTONE COUNTRY



MONTANA'S GREAT WIDE OPEN

BADLANDS TO BREAKS TO BEARTOOTH MOUNTAINS

In Montana, where our landscapes stretch as far and wide as the big sky itself and hold so many opportunities to experience history, exhilarating recreation and towns with authentic Western character, how do you begin figuring out where to go and what to see?

We suggest checking out our eight road trip adventures (below and on our website: montanagreatwideopen.com). Designed to immerse you in one or more of the magnificent Badlands, Breaks and Beartooths landscapes, these itineraries will guide you to some of Montana's quintessential experiences and most memorable recreational, historical and cultural points of interest. Whichever terrain captures your imagination, you'll find an itinerary below that will help you explore it to the fullest.

Scan the QR codes below to find trip planning inspiration and information for a road trip experience that highlights the open-road journey as much as the remarkable destinations.

MONTANASGREATWIDEOPEN.COM



MONTANA BADLANDS

Otherworldly terrain characterized by steep slopes, gullies, buttes and fantastically shaped hoodoos and rock formations.

Makoshika State Park. Photo by Jordan Leffer



MISSOURI RIVER BREAKS

The rugged cliffs, slopes, canyons and ravines of higher-elevation land that "breaks" into the Missouri River's edge.

Upper Missouri River Breaks National Monument. Photo by Jordan Leffer



BEARTOOTH MOUNTAINS

A majestic range that includes Montana's 41 highest peaks and is named for a steep, jagged peak resembling a bear's tooth.

Hiking off the Beartooth Highway. Photo by Visit Montana



Fort Peck Lake. Photo by Jordan Leffer

1

Badlands to Breaks to Beartooths Loop

8 DAYS: The grand tour for travelers seeking a road trip as expansive as the skies over Montana. Traverse badlands, breaks and Beartooths landscapes, and visit the towns, museums and historical sites, and recreational places that bring them to life along the way.



Terry Badlands. Photo by Cassie Solberg

2

Badlands Loop

3 DAYS: Explore mesmerizing badlands landscapes as you discover opportunities for four-season recreation and traces of the area's history and culture — from dinosaurs to the Sioux and Assiniboine tribes, Lewis and Clark and the arrival of pioneers.



Sand Arroyo Badlands. Photo by Jordan Leffer

3

Badlands to Breaks Loop

5 DAYS: From the badlands to the heart of Montana to the stunning Missouri River breaks, get acquainted with the state's remote corners of outstanding beauty and wilderness and experience authentic rural towns, unparalleled recreation and fascinating history.



Missouri River Breaks. Photo by Jordan Leffer

4

Breaks Loop

4 DAYS: Exhilarating recreation and captivating history flow together in this trip, where the Missouri River Breaks take center stage. Explore how the river shaped the region as we know it today and fish, hunt, hike or watch wildlife in pristine landscapes.

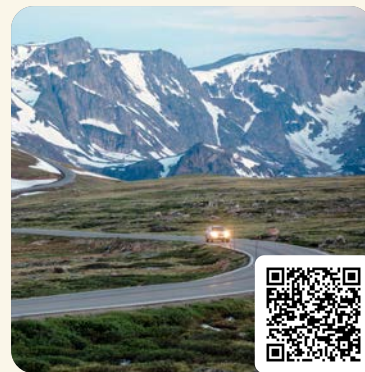


Basin Creek Lakes in the Beartooth Mountains. Photo by Jordan Leffer

5

Breaks to Beartooths Loop

5 DAYS: Discover multifaceted Montana history — dinosaur fossils, Native American sites, Lewis and Clark's expedition and early settlements — and world-class recreation in the towns and landscapes stretching from the breaks in the north to the Beartooths in the south.



Beartooth Highway All-American Road. Photo by Andy Austin

6

Beartooths Loop

3 DAYS: Experience incredible recreation and endlessly charming communities among the peaks, foothills and valleys of the Beartooth Mountains. Note that the iconic Beartooth Highway — a highlight of this route — is closed to all traffic in the winter.

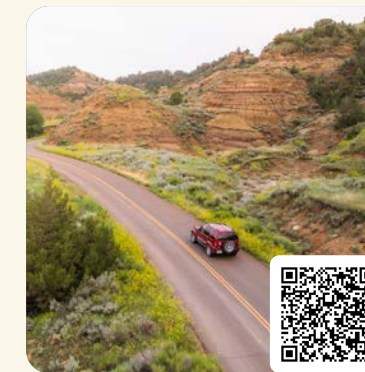


Makoshika State Park. Photo by Visit Montana.

7

Beartooths to Badlands Loop

5 DAYS: In this trip, begin your Montana explorations in the shadow of the mighty Beartooth Mountains before striking out across open prairie to reach the captivating badlands in the east. Montana history, incredible recreation and welcoming towns await!



Makoshika State Park. Photo by Jordan Leffer

8

Highway 12 Beartooths to Badlands Loop

6 DAYS: Experience the kind of far-reaching vistas that earned Montana the moniker Big Sky Country. Journey from the mighty Beartooth Mountains east, looping through otherworldly badlands before heading back west through vast prairie on remote Highway 12.



1.406.761.5036 | CENTRALMONTANA.COM



1.800.653.1319 | MISSOURIRIVERMT.COM



1.800.346.1876 | SOUTHEASTMONTANA.COM



1.800.736.5276 | VISITYELLOWSTONECOUNTRY.COM