

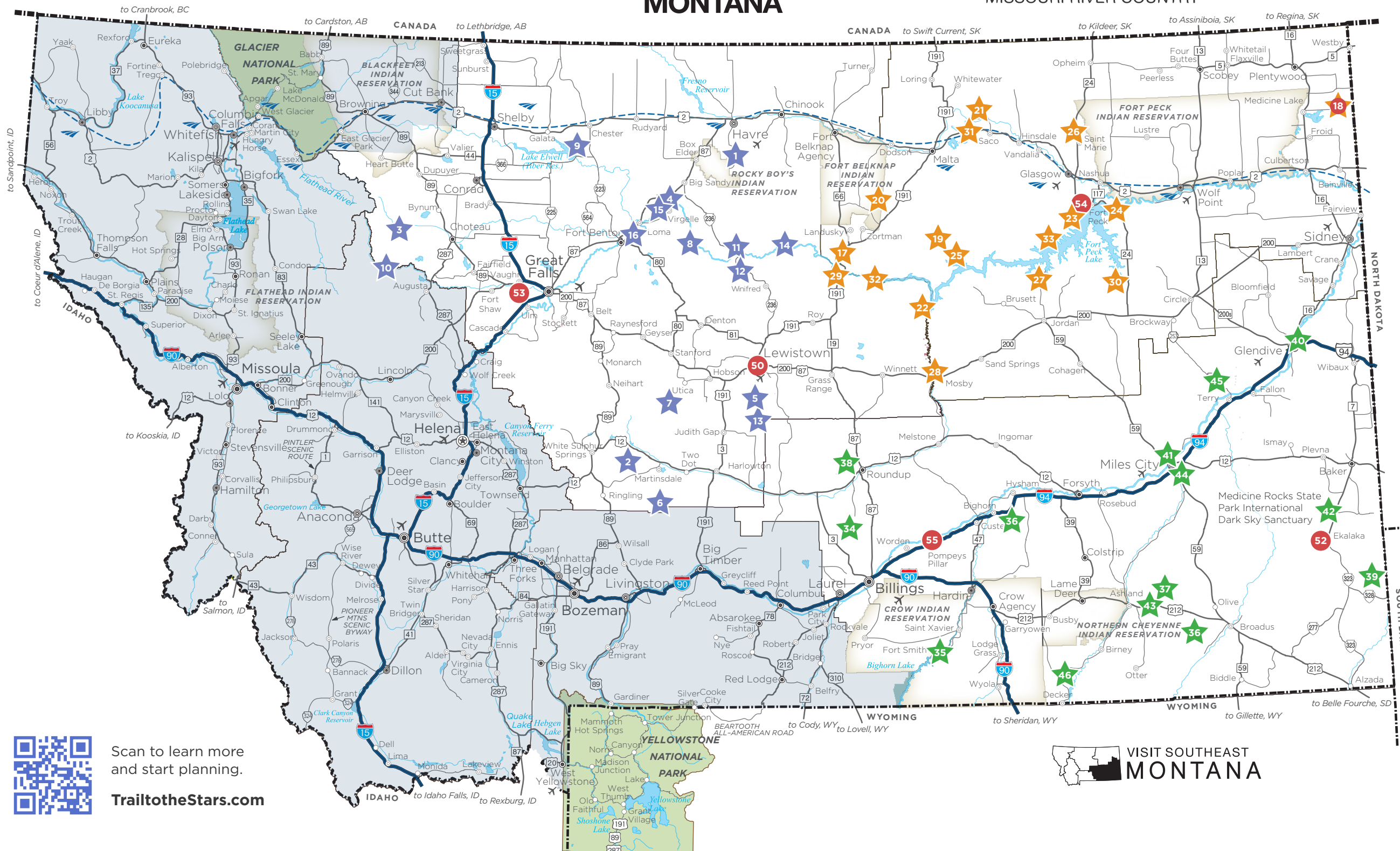


MONTANA'S TRAIL TO THE STARS

Welcome to Montana's Trail to the Stars, where you'll find loads of options for enjoying our magnificent dark skies, from just on the outskirts of a town to out in the middle of nowhere. We hope that you will find a location, or several, to kick back and look to the stars. Before you set out to enjoy our night skies, though, we urge you to pay attention to the special circumstances you may face when visiting our stargazing locations—and to always RECREATE RESPONSIBLY. Visit TrailtotheStars.com for more information and resources. We'll see you on the Trail!

central MONTANA

MONTANA'S MISSOURI RIVER COUNTRY



STARGAZING LOCATIONS

CENTRAL MONTANA

- 1 Beaver Creek County Park
- 2 Bonanza Creek Country Guest Ranch
- 3 Cave Mountain
- 4 Coal Banks Landing
- 5 Crystal Lake
- 6 Forest Lake
- 7 Hay Canyon Campground
- 8 Hole in the Wall Campground
- 9 Island Area at Tiber Dam
- 10 JJJ Wilderness Ranch
- 11 Judith Landing
- 12 Myers Family Huts
- 13 Timber Creek Dispersed Campground
- 14 Upper Missouri River Breaks
- 15 Virgelle Merc, B&B & Cabins
- 16 Wood Bottom

MISSOURI RIVER COUNTRY

- 17 Antelope Creek Campground
- 18 Brush Lake State Park
- 19 Buffalo Camp
- 20 Camp Creek
- 21 Cole Ponds
- 22 Crooked Creek
- 23 Duck Creek Recreation Area
- 24 Flat Lake
- 25 Fourchette Bay
- 26 Glasgow Base Pond
- 27 Hell Creek Recreational Area
- 28 Hill Ranch Oasis Bed & Breakfast
- 29 James Kipp Recreation Area
- 30 Nelson Creek
- 31 Nelson Reservoir
- 32 Slippery Ann Wildlife Viewing Area
- 33 The Pines Recreation Area

SOUTHEAST MONTANA

- 34 Acton Recreation Area
- 35 Afterbay Cmpgrnd / Bighorn Natl Rec Area
- 36 Diamond Butte Lookout
- 37 Holiday Spring Campground
- 38 Horsethief Recreation Area
- 39 Lantis Spring Campground
- 40 Makoshika State Park
- 41 Matthews Recreation Area
- 42 Medicine Rocks State Park International Dark Sky Sanctuary
- 43 Red Shale Campground
- 44 Strawberry Hill Recreation Area
- 45 Terry Badlands Overlook
- 46 Tongue River State Park

EVENTS / PROGRAMS

- 50 American Prairie National Discovery Center
- 18 Brush Lake State Park
- 52 Carter County Museum
- 53 First Peoples Buffalo Jump State Park
- 54 Fort Peck Interpretive Center
- 55 Huntley Museum of Agriculture



Scan to learn more and start planning.

TrailtotheStars.com

VISIT SOUTHEAST MONTANA



MONTANA'S TRAIL TO THE STARS

CENTRAL MONTANA



PHOTO BY JAKE WILLSON



PHOTO BY GIB MYERS

50. American Prairie National Discovery Center

47.0653154, -109.4265162
302 W. Main Street | Lewistown, MT
406-585-4600 | Open year-round

1. Beaver Creek County Park
48.2946468, -109.6651342
Park office: 17863 Beaver Creek Rd | Havre, MT
406-395-4565, 800-346-1876 | Open year-round

2. Bonanza Creek Country Guest Ranch
46.4734424, -110.5955012
523 Bonanza Creek Rd | Martinsdale, MT
800-476-6045 | June - November
(weather permitting)

3. Cave Mountain
47.8896233, -112.7264532
27 miles northwest of Chouteau
406-466-5341, 800-346-1876 | Summer

4. Coal Banks Landing
48.0322880, -110.2367259
5901 Virgelle Ferry Road N. | Loma, MT
406-378-2607 | April - November

5. Crystal Lake
46.8048068, -109.5109992
22 miles southeast of Moore
406-566-2292 | June - October

53. First Peoples Buffalo Jump State Park
47.4797586, -111.5247494
342 Ulm-Vaughn Road | Ulm, MT
406-454-5840 | Open year-round

6. Forest Lake
46.2449929, -110.4369747
56 miles southeast of Sulphur Springs
406-791-7700 | Summer

7. Hay Canyon Campground
46.7988281, -110.2998993
28 miles southwest of Hobson
406-761-5036 | Memorial Day - Labor Day

8. Hole in the Wall Campground
47.820047, -110.0646347
64 river-miles from Fort Benton
406-888-7800 | April - November

9. Island Area at Tiber Dam
48.3354608, -111.1301749
19 miles southwest of Chester
406-759-5077 | Open year-round

10. JJJ Wilderness Ranch
47.6265645, -112.7693451
91 Mortimer Road | Augusta, MT
406-562-3653 | Open year-round

11. Judith Landing
47.7413775, -109.6251345
40 miles southeast of Big Sandy
406-622-4000 | May 15 - October 15

12. Myers Family Huts
47.7277848, -109.6331570
Call for directions
406-585-4600 | Open year-round

13. Timber Creek Dispersed Campground
46.7252772, -109.4858988
18 miles northeast of Judith Gap
406-632-4391, 800-346-1876 | Open year-round

14. Upper Missouri River Breaks
47.8100032, -110.6738276
Begins at Fort Benton
406-538-1900, 800-346-1876 | Open year-round

15. Virgelle Merc, B&B & Cabins
48.0147636, -110.2495973
7485 Virgelle Ferry Road | Virgelle, MT
406-378-3110, 800-426-2926 | Open year-round

16. Wood Bottom
47.9217931, -110.4962457
3 miles southeast of Loma
406-622-4000 | April - November

17. Antelope Creek Campground
47.7413750, -108.7138030
72 miles northeast of Lewistown
406-585-4600 | Memorial Day weekend - first weekend in October

18. Brush Lake State Park
48.6064265, -104.1004124
30 miles southeast of Plentywood
406-228-3700, 855-922-6768 | May - October

MISSOURI RIVER COUNTRY

19. Buffalo Camp
47.7626918, -107.7724762
47 miles south of Malta
406-585-4600 | Open year-round

20. Camp Creek
47.9217457, -108.5132910
46 miles southwest of Malta
406-654-5100 | 800-653-1319 | April - November

21. Cole Ponds
48.5391574, -107.4660967
12 miles northwest of Saco
406-228-3706, 800-653-1319 | Open year-round

22. Crooked Creek
47.4307509, -107.9307533
50 miles northeast of Winnett
800-653-1319 | Open year-round

23. Duck Creek Recreation Area
47.9885530, -106.5245758
3 miles southwest of Fort Peck
406-526-3411, 800-653-1319 | Open year-round

24. Flat Lake
48.0141147, -106.3638675
3 miles east of Fort Peck
406-526-3411, 800-653-1319 | Open year-round

25. Fourchette Bay
47.6703023, -107.6645621
54 miles south of Malta
406-526-3411, 800-653-1319 | Open year-round

26. Glasgow Base Pond
48.4487069, -106.5767982
20 miles north of Glasgow
406-228-3706, 800-653-1319 | Open year-round

27. Hell Creek Recreational Area
47.6159654, -106.8880848
2456 Hell Creek Road | Jordan, MT
406-557-2362 | Open year-round

28. Hill Ranch Oasis Bed & Breakfast
46.9739045, -107.8217294
23 Hill Road | Mosby, MT
406-429-6801 | Open year-round

29. James Kipp Recreation Area
47.6229735, -108.6883924
28 miles northeast of Roy
406-538-1900 | April - November

30. Nelson Creek
47.5625022, -106.2238310
55 miles northeast of Jordan
406-526-3411, 800-653-1319 | May - November

31. Nelson Reservoir
48.4918313, -107.5295737
19 miles northeast of Malta
406-759-5077, 800-653-1319 | Open year-round

32. Slippery Ann Wildlife Viewing Area
47.6185415, -108.5730832
Charles M. Russell Wildlife Refuge
406-464-5181, 800-653-1319 | Open year-round

33. The Pines Recreation Area
47.8394813, -106.6415746
31 miles southwest of Fort Peck
406-526-3411, 800-653-1319 | Open year-round

34. Acton Recreation Area
46.0444930, -108.6639092
28 miles north of Billings
406-896-50134, 800-346-1876 | Open year-round

35. Afterbay Campground / Bighorn Canyon National Recreation Area
45.3152422, -107.9401537
285 Afterbay Campground Road | Fort Smith, MT
406-666-2333, 800-653-1319 | Open year-round

36. Diamond Butte Lookout
45.2497093, -105.9329906
50 miles southwest of Broadus
800-346-1876 | September 15 - May 15 (reservations required for tower lookout, check road conditions)

37. Holiday Spring Campground
45.6379, -105.9770479
16 miles north of Ashland
406-784-2344, 800-346-1876 | Open year-round (depending on snow levels)

38. Horsethief Recreation Area
46.4765671, -108.6734115
8 miles northwest of Roundup
800-346-1876 | Open year-round (check road conditions)

39. Lantis Spring Campground
45.6300351, -104.1770112
31 miles southeast of Ekalaka
406-587-6701, 800-346-1876 | Open year-round

40. Makoshika State Park
47.0893807, -104.7067180
1301 Snyder St. | Glendive, MT
406-377-6256, 800-346-1876 | Open year-round

41. Matthews Recreation Area
46.5023731, -105.7312233
249 Tusler Road | Miles City, MT
406-377-6256, 800-346-1876 | Open year-round

42. Medicine Rocks State Park International Dark Sky Sanctuary
46.0453435, -104.4573912
11 miles south of Baker
406-377-6256, 800-346-1876 | May 1 - November 15

43. Red Shale Campground
45.5676849, -106.1458008
6 miles east of Ashland
406-784-2344, 800-346-1876 | April 1 - December 1

44. Strawberry Hill Recreation Area
46.4147783, -105.6721499
6 miles east of Miles City
406-233-2800, 800-346-1876 | Open year-round

45. Terry Badlands Overlook
46.8306911, -105.3933376
7 miles northwest of Terry
406-233-2800, 800-346-1876 | Open year-round (check road conditions)

46. Tongue River State Park
45.1005792, -106.7934058
7 miles northwest of Terry
290 Campers Point | Decker, MT
406-757-2298 | Open year-round

SOUTHEAST MONTANA



PHOTO BY KEVIN LEAGUE



PHOTO BY NATHAN SATRAN PHOTOGRAPHY

47. Acton Recreation Area
46.0444930, -108.6639092
28 miles north of Billings
406-896-50134, 800-346-1876 | Open year-round

48. Afterbay Campground / Bighorn Canyon National Recreation Area
45.3152422, -107.9401537
285 Afterbay Campground Road | Fort Smith, MT
406-666-2333, 800-653-1319 | Open year-round

49. Carter County Museum
45.89117667, -104.5465006
3306 N. Main Street | Ekalaka, MT
406-775-6886 | Open year-round

50. Diamond Butte Lookout
45.2497093, -105.9329906
50 miles southwest of Broadus
800-346-1876 | September 15 - May 15 (reservations required for tower lookout, check road conditions)

51. Holiday Spring Campground
45.6379, -105.9770479
16 miles north of Ashland
406-784-2344, 800-346-1876 | Open year-round (depending on snow levels)

52. Horsethief Recreation Area
46.4765671, -108.6734115
8 miles northwest of Roundup
800-346-1876 | Open year-round (check road conditions)

53. Lantis Spring Campground
45.6300351, -104.1770112
31 miles southeast of Ekalaka
406-587-6701, 800-346-1876 | Open year-round

54. Makoshika State Park
47.0893807, -104.7067180
1301 Snyder St. | Glendive, MT
406-377-6256, 800-346-1876 | Open year-round

55. Matthews Recreation Area
46.5023731, -105.7312233
249 Tusler Road | Miles City, MT
406-377-6256, 800-346-1876 | Open year-round

56. Medicine Rocks State Park International Dark Sky Sanctuary
46.0453435, -104.4573912
11 miles south of Baker
406-377-6256, 800-346-1876 | May 1 - November 15

ACCESSIBILITY	RV	CAMPING	Some amenities are seasonal—be sure to confirm availability in advance.
BOAT LAUNCH	RV DUMP	ELECTRICITY	
CABIN	VAULT TOILETS	EVENTS/PROGRAMMING	



Scan to learn more and start planning.

TrailtotheStars.com